



£400,000 Guide Price

Boroughbridge Road, Knaresborough

Detached House | 4 Bedrooms | 2 Bathrooms

01423 276100

N
NEWBY JAMES

www.newbyjames.co.uk



Step Inside

Property Description

**** DEVELOPMENT OPPORTUNITY ****

A detached four bedroom dormer bungalow occupying an large plot extending to approx. 0.2 acre situated in this sought after and ever popular position.

Main Particulars

**** DEVELOPMENT OPPORTUNITY ****

A detached four bedroom dormer bungalow occupying an large plot extending to approx. 0.2 acre situated in this sought after and ever popular position.

The property offers huge potential and will appeal to a wide range of buyers with its scope for further development or renovation.

Offered with gas fired central heating and uPVC double glazing the accommodation currently comprises; entrance hall with banister staircase to first floor, bay fronted sitting room, kitchen with pantry and side access, two double bedrooms and bathroom. The property leads to additional living space / annexe with its own separate access and comprising entrance hall, wc, double bedroom and a sitting room with sliding doors through to a conservatory.

To the first floor a double bedroom and ample eaves and cupboard storage.

Outside the property occupies an enviable 0.2 acre approx. plot with driveway providing ample off street parking and leads to two detached garages. To the front, side and rear there are shaped lawns and seating areas.

The property is situated within the sought after residential location and is within easy access of the town centre shopping, recreational and schooling facilities offered within this popular market town which has a railway station with mainline links.

Tenure: Freehold

Parking options: Off Street, Garage

Garden details: Private Garden

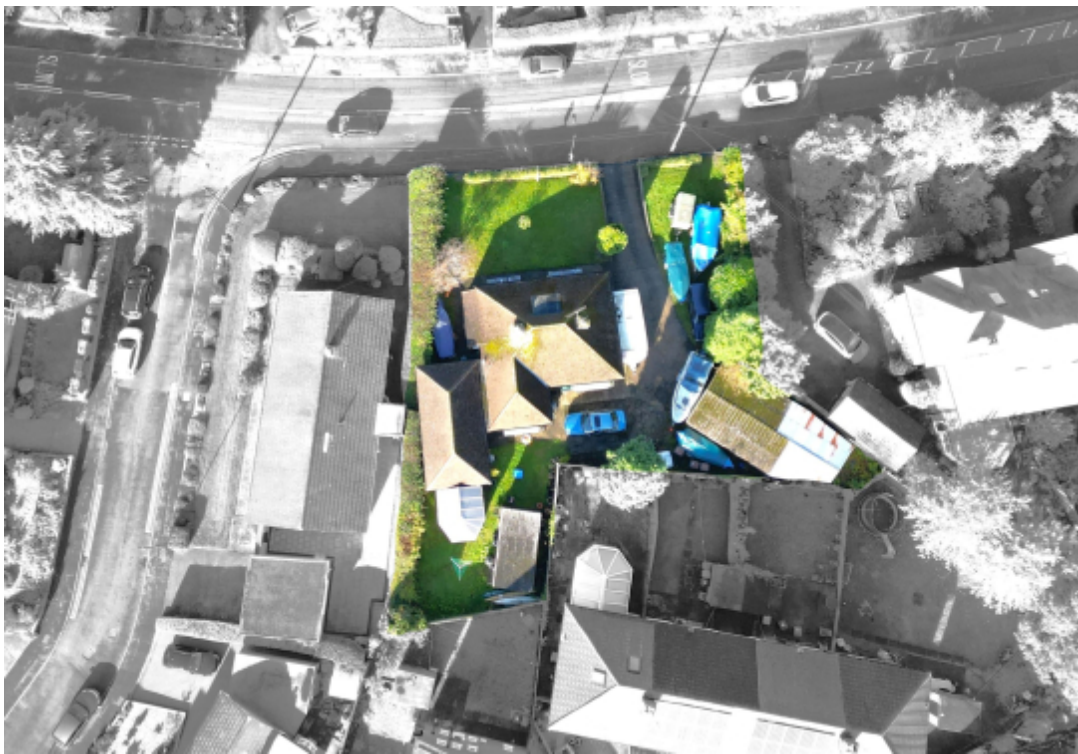




Image not found

This floorplan is for illustrative purposes only and the location of doors, windows and other items are approximate.

Telephone: 01423 276100

N
NEWBY JAMES
ESTATE AGENTS

www.newbyjames.co.uk