



£365,000 Guide Price

Aspin Drive, Knaresborough

Semi-Detached House | 4 Bedrooms | 1 Bathroom

01423 276100



www.newbyjames.co.uk



Step Inside

Property Description

**** OPEN TO VIEW - SATURDAY 23RD AUGUST - BY APPOINTMENT ONLY ****

A well presented four bedroom semi detached house with gardens to the front and rear, off street parking and garage, situated in this sought after and popular residential location.

Main Particulars

**** OPEN TO VIEW - SATURDAY 23RD AUGUST - BY APPOINTMENT ONLY ****

A well presented four bedroom semi detached house with gardens to the front and rear, off street parking and garage, situated in this sought after and popular residential location.

This excellent family home features spacious accommodation arranged over three floors, comprising; entrance hall with storage cupboard and stairs to first floor, light and airy living dining room leading to a modern fitted kitchen with rear access door and ground floor guest wc.

To the first floor there are three good size bedrooms and a bespoke shower room with walk in shower, vanity unit with bowl sink and wall mounted wc. Space saving peddle stairs lead to the second floor where there is a large bedroom with Velux windows.

Outside and to the front of the property there is a gravelled garden with mature hedges providing privacy. To the side a driveway provides off street parking and leads to a detached garage. To the rear a larger than average garden laid mainly to lawn with gravelled seating area and bar.

The property is situated within this highly sought after residential location and is within easy access of the town centre shopping, recreational and schooling facilities offered within this popular market town which has a railway station with mainline links. The southern bypass and the A1(M) are also convenient and provide access to the principle commercial centres of North and West Yorkshire.

Tenure: Freehold

Parking options: Garage, Off Street

Garden details: Private Garden

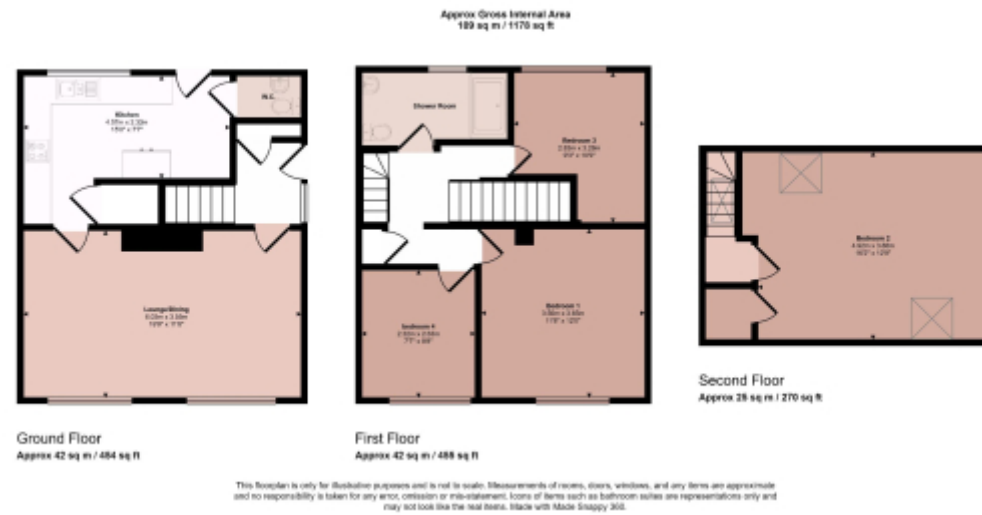
Electricity supply: Mains

Heating: Gas Mains

Water supply: Mains

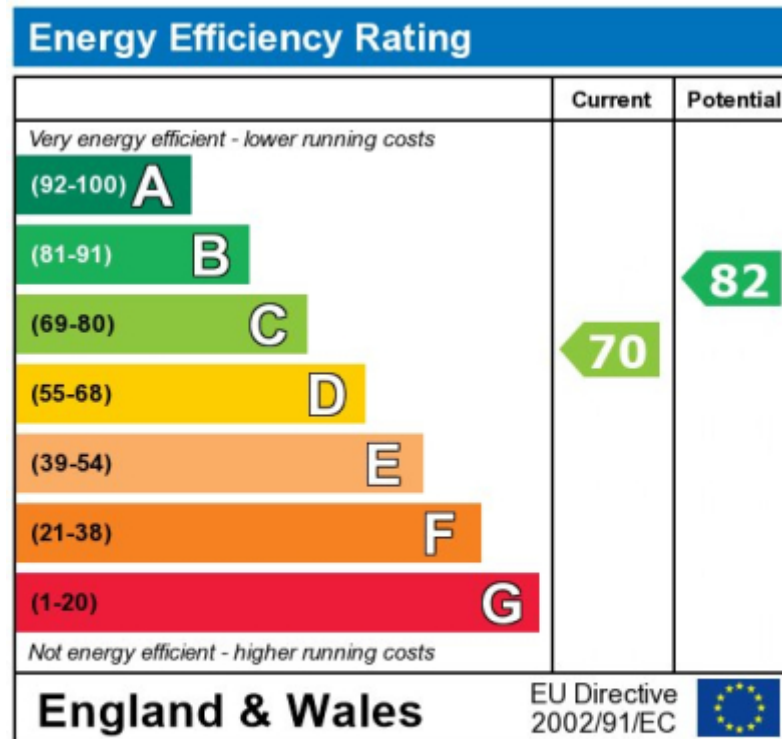
Sewerage: Mains





This floorplan is for illustrative purposes only and the location of doors, windows and other items are approximate.

Agents notes: All measurements are approximate and for general guidance only and whilst every attempt has been made to ensure accuracy, they must not be relied on. The fixtures, fittings and appliances referred to have not been tested and therefore no guarantee can be given that they are in working order. Internal photographs are reproduced for general information and it must not be inferred that any item shown is included with the property. Copyright © 2025 13566874 Registered Office: , 15 Market Place, Knaresborough, HG5 8AL



The energy efficiency rating is a measure of the overall efficiency of a home. The higher the rating the more energy

Telephone: 01423 276100

N
NEWBY JAMES
ESTATE AGENTS

www.newbyjames.co.uk