



£160 Monthly

Victoria Avenue, Knaresborough

Office

01423 276100

N
NEWBY JAMES

www.newbyjames.co.uk



Step Inside

Property Description

An opportunity to lease a first floor office space (10ft x 10ft) situated within the period terrace building comprising a number of offices appealing to a variety of purposes/occupiers. All inclusive to include all utilities.

Main Particulars

An opportunity to lease a first floor office space (10ft x 10ft) situated within the period terrace building comprising a number of offices appealing to a variety of purposes/occupiers. The rental figure quoted is all inclusive to include all utilities and Wifi including: water, electric and heating. There is parking available.

The property forms part of the popular Scriven district of Knaresborough. The town centre is only one mile distant with and includes a railway station with mainline links. The southern bypass is convenient and Harrogate is readily accessible by road, bus and rail with the A1(M) providing access to the commercial centres of North and West Yorkshire.

Rates

Inclusive of rates.

Terms

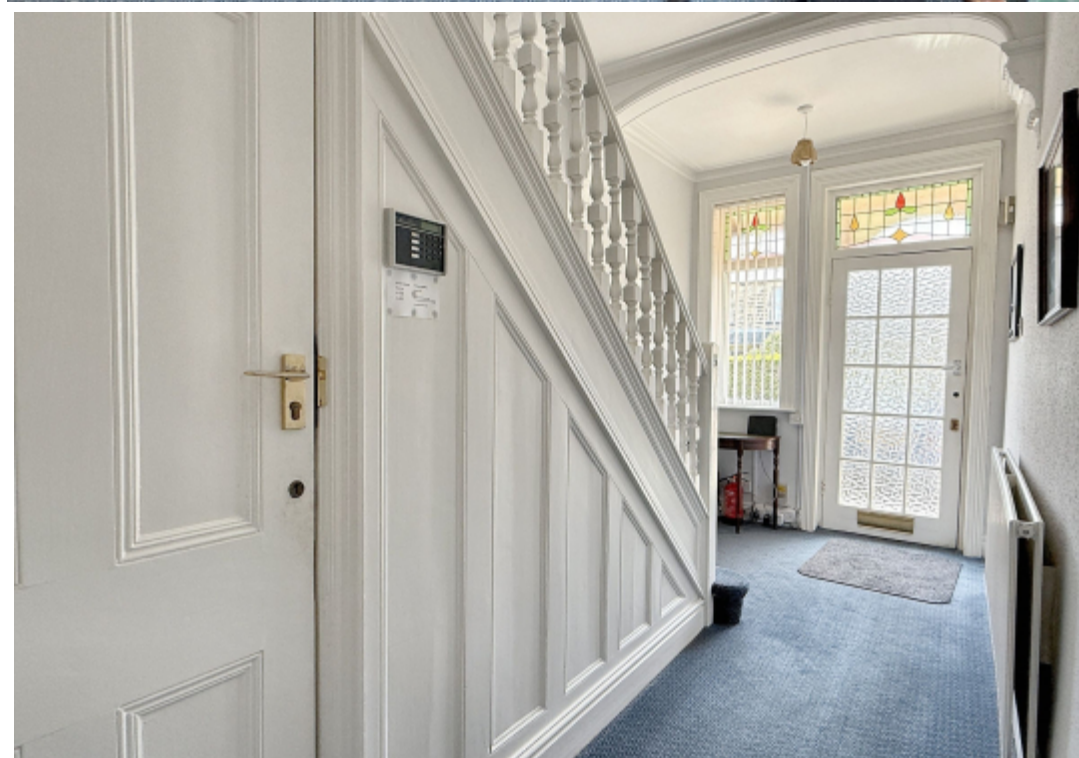
Leasehold. New, flexible terms available and to be negotiated.

Services

All mains services are connected to the property.

Viewing

If you would like to view this property, please contact Newby James.



Telephone: 01423 276100



www.newbyjames.co.uk