



£315,000 Guide Price

Chain Lane, Knaresborough

Detached House | 2 Bedrooms | 2 Bathrooms

01423 276100

N  
NEWBY JAMES

[www.newbyjames.co.uk](http://www.newbyjames.co.uk)



# Step Inside

---

## Key Features

- Detached Family Home
- Fitted Kitchen
- Garage
- Rear garden perfect for entertaining
- South-west facing rear garden
- Parking for 6 vehicles

## Property Description

**\*\*Virtual Tour\*\***

A spacious 2 double bedroom, 2 bathroom detached property in a highly desirable and convenient location.

## Main Particulars

**\*\*Virtual Tour\*\***

A spacious 2 double bedroom, 2 bathroom detached property on Chain Lane delivers a strong balance of convenience and family-focused living. With a wide range of local amenities, schools, and transport links all within easy reach, the property is ideally positioned to support efficient day-to-day routines.

Internally, the home offers two spacious bedrooms and two well-appointed bathrooms, providing flexibility for families or those requiring additional space.

The main reception room creates a warm and inviting setting for both relaxation and entertaining, while the kitchen diner acts as the central hub-designed to be both practical and sociable, ideal for family meals and gatherings.

To the rear, the property benefits from a private, South West-facing enclosed garden, offering a secure and low-maintenance outdoor space perfectly suited for families. Whether for children to play safely or for hosting in a more private environment, this feature adds clear lifestyle value.

Further enhancing its appeal, the property includes a garage and off-street parking for up to six vehicles, ensuring ample space for storage and accessibility.

Overall, this is a well-rounded opportunity-combining strong connectivity to local amenities with a private outdoor setting, aligning with the key priorities of modern family buyers.

Council Tax Band: D

Tenure: Freehold

Parking options: Driveway, Garage

Garden details: Enclosed Garden, Front Garden, Private Garden, Rear Garden

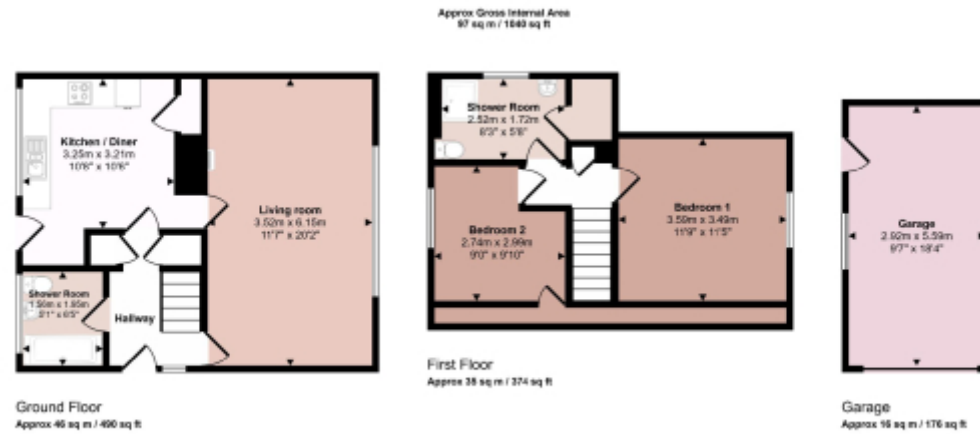
Electricity supply: Mains

Heating: Gas Mains

Water supply: Mains

Sewerage: Mains

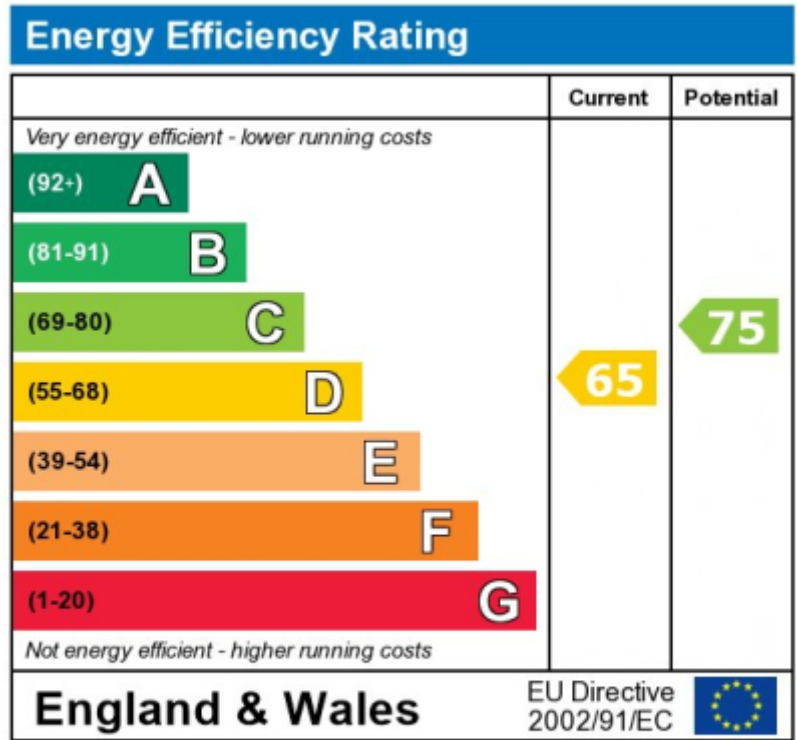




This floorplan is only for illustrative purposes and is not to scale. Measurements of rooms, doors, windows, and any items are approximate and no responsibility is taken for any error, omission or mis-statement. Items of items such as bathroom suites are representations only and may not look like the real items. Made with Mass Graffiti 2024.

This floorplan is for illustrative purposes only and the location of doors, windows and other items are approximate.

Agents notes: All measurements are approximate and for general guidance only and whilst every attempt has been made to ensure accuracy, they must not be relied on. The fixtures, fittings and appliances referred to have not been tested and therefore no guarantee can be given that they are in working order. Internal photographs are reproduced for general information and it must not be inferred that any item shown is included with the property. Copyright © 2026 13566874 Registered Office: , 15 Market Place, Knaresborough, HG5 8AL



The energy efficiency rating is a measure of the overall efficiency of a home. The higher the rating the more energy

Telephone: 01423 276100



[www.newbyjames.co.uk](http://www.newbyjames.co.uk)